

DILUTION SYSTEM

APK 6100

STANDARD GAS DILUTOR

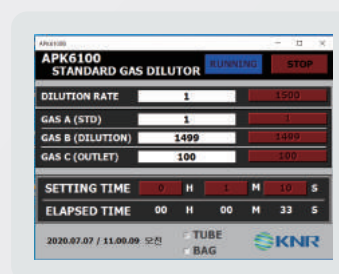


STANDARD GAS DILUTOR

The APK6100 is an accurate calibration gas dilutor using a high-precision mass flow controller (when it's MFC type). In order to perform multi-point calibrations of your thermal desorption systems, a calibration gas is needed with varying concentrations. The APK6100 can provide different gas standards from a single gas cylinder in the ppm range down to low level ppb. The systems dilution ratio is 1:5 – 1:1500.

FEATURES

- 3 MFCs (Mass Flow Controller) application
- Control the discharge flow of diluted gas within 1~200mL/min breakthrough-volume of the sorbent tubes
- Applicable to the sorbent tubes, sampling bags, and analyzers
- Convenient use by dedicated software
- Applicable for chamber recovery ratio test for construction materials



APPLICATION

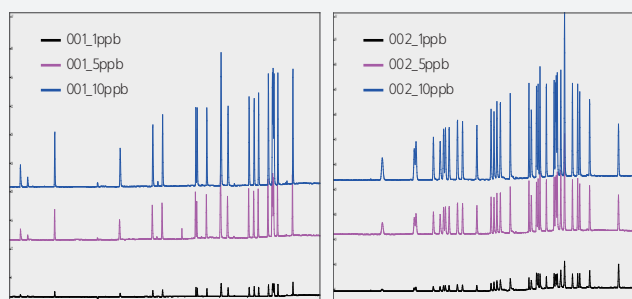
- Dilution for organic/non-organic gas
- Analytical instrument accuracy inspection
- GHG test
- Recovery ratio exam
- Sensor exam
- Standard gas, sample gas dilution
- Canister sampling
- Vaporizing dilution with liquid standard
- Sorbent tube/sampling dilution

OPERATING CONDITION

- Standard Gas Dilutor for Canister (APK6100, KNR)

PARAMETER	LINEARITY		
	STD1	STD2	STD3
Dilution Ratio	1:1000	1:200	1:100
STD (mL/min)*	90	90	180
Pressure (psi)	30	30	30
Canister Volume (L)	6	6	6

* STD : PAMS 10 umol/mol, ** N₂ : purity 99.999%



SPECIFICATION

SPECIFICATIONS	
MFC	Accuracy ±1% of F.S, linearity ±0.5% of F.S, Repeatability ±0.2% of F.S, MFC Control 0.000 ~ 5.000 VDC (Resolution : 0.001 VDC)
Mixing type	Mixing chamber or Mixing tube
Dilution ratio	1 : 5 ~ 1 : 1,500
Control Program	APK6100
Dimension	372 x 424 x 210 (W x D x H mm)
Power	220 VAC, 50/60 Hz